



Automated Telescopes at

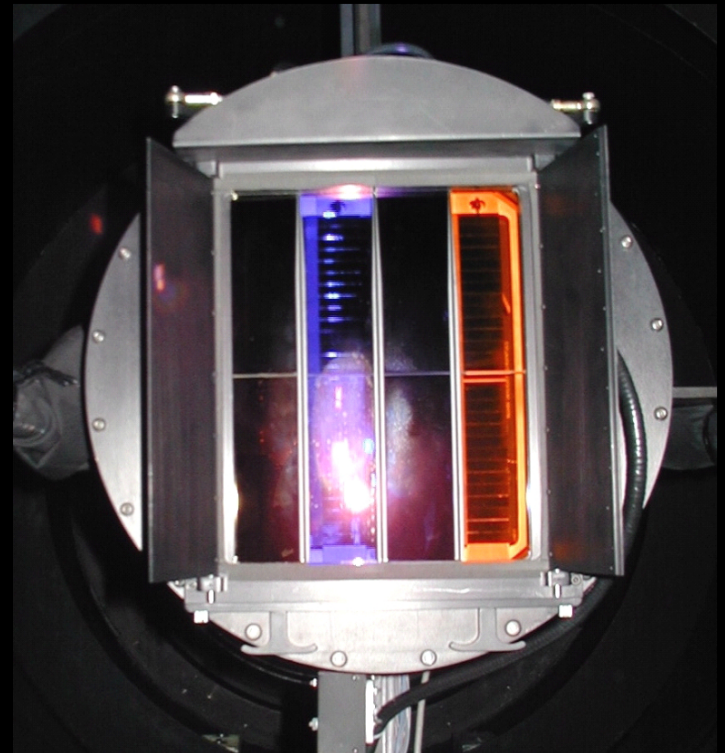


Powered by HPWREN

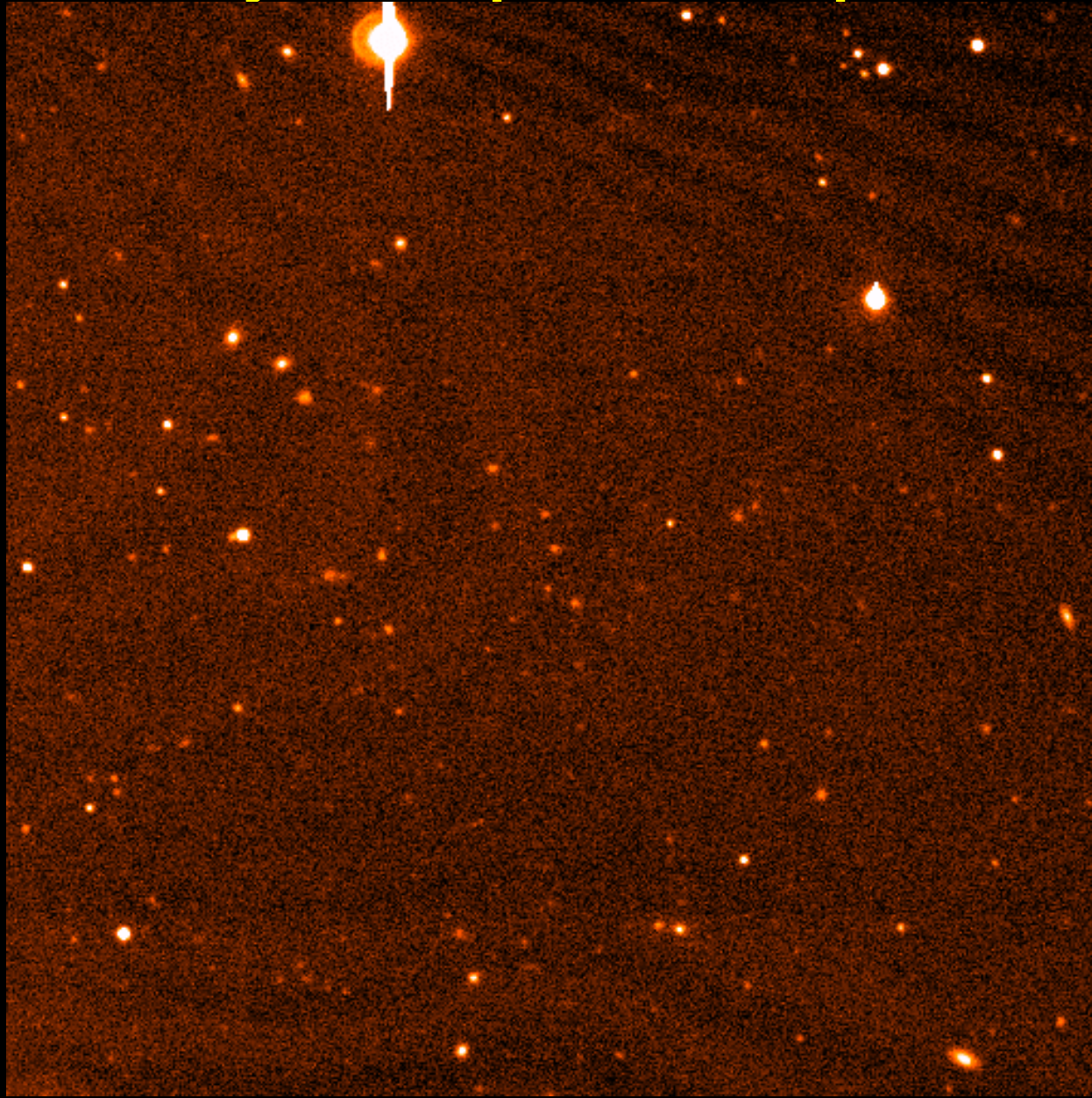


Automated Telescope # 1

- 48-inch Samuel Oschin Telescope performs the Palomar QUEST, NEAT & Kuiper Belt surveys



Can you spot the planet?



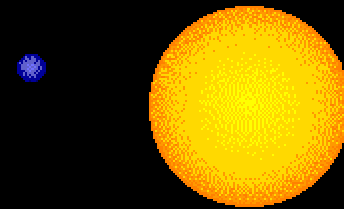
Automated Telescope # 2

- 60-inch telescope makes rapid follow-up observations of supernovae and gamma-ray bursts



Automated Telescope # 3

- *Sleuth* – a small robotic telescope searching for transiting extrasolar planets



Automated Telescope # 4

- **Multi-Aperture Scintillations Sensor- Differential Image Motion Monitor**

T5 webcam 2 Tue Sep 20 10:04:34 2005



Future Home of Automated Telescope # 5



- A 24-inch telescope that will monitor the weather on Saturn's moon Titan

HPWREN link upgraded to an FCC-Licensed Band



- Funding in place for a second link (to Pine Cove)
- Currently ~40Gb of data transferred per night

Scott Kardel
Palomar Observatory
(760) 742-2111
wsk@astro.caltech.edu

- <http://www.astro.caltech.edu/palomar>