

HPWREN Users Meeting 2005

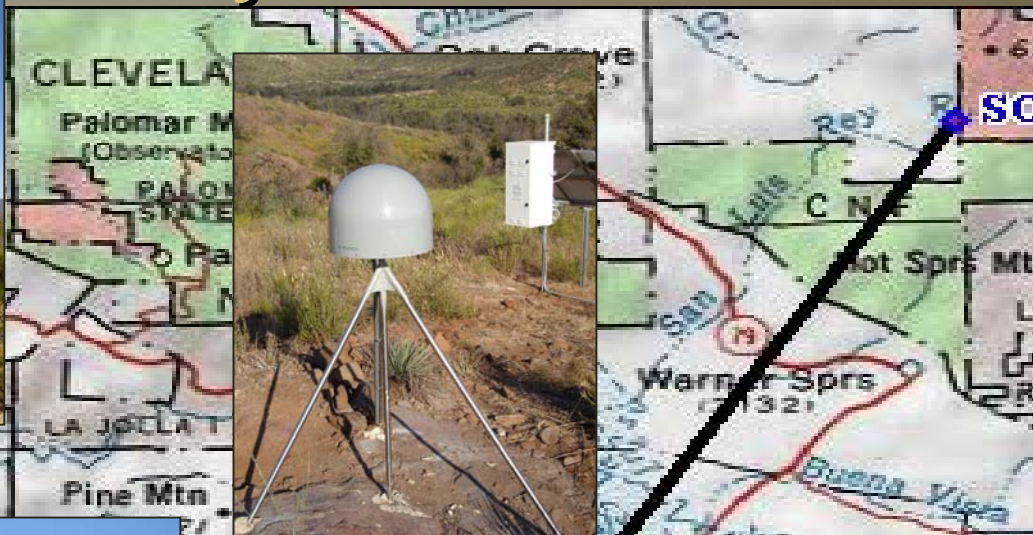
San Diego State University

Field Station Programs

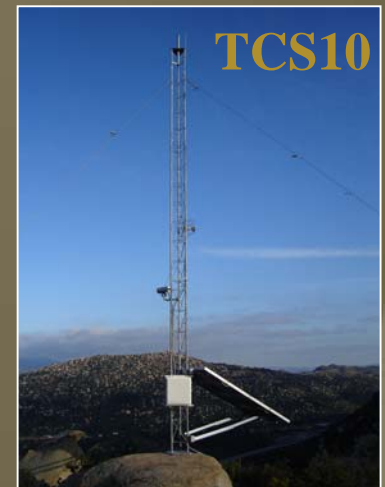
- Sky Oaks Link Established
- Intra-SMER Expansion to Highlands
- Fire Sensor Project
- Web Content
- HPWREN at SDSU
- Intra-SMER Backbone Upgrade
- Emergency Response



Sky Oaks Link

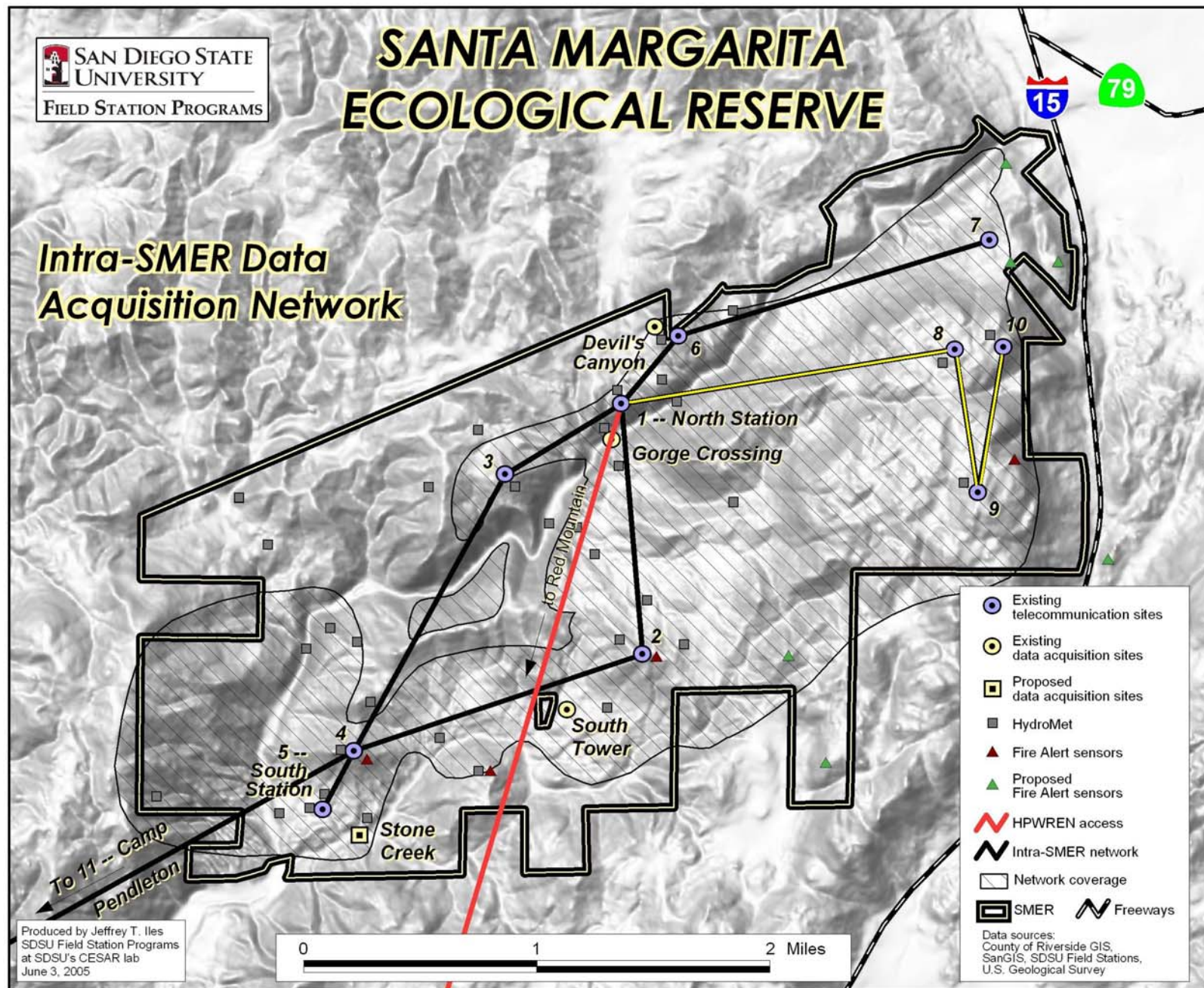


SMER Highlands Install



SANTA MARGARITA ECOLOGICAL RESERVE

Intra-SMER Data Acquisition Network



Fire Sensor Demonstration Project at Santa Margarita Ecological Reserve

- Demonstrate and evaluate early warning system and community education website
- \$1.2 million project funded by the National Telecommunications and Information Administration
- Collaboration among community groups, business, universities, public agencies



high performance wireless research and education network

NORTH COUNTY FIRE PROTECTION DISTRICT
SERVING FALLBROOK, BONSALE, AND RAINBOW

Fire Sensor Demonstration Project at Santa Margarita Ecological Reserve

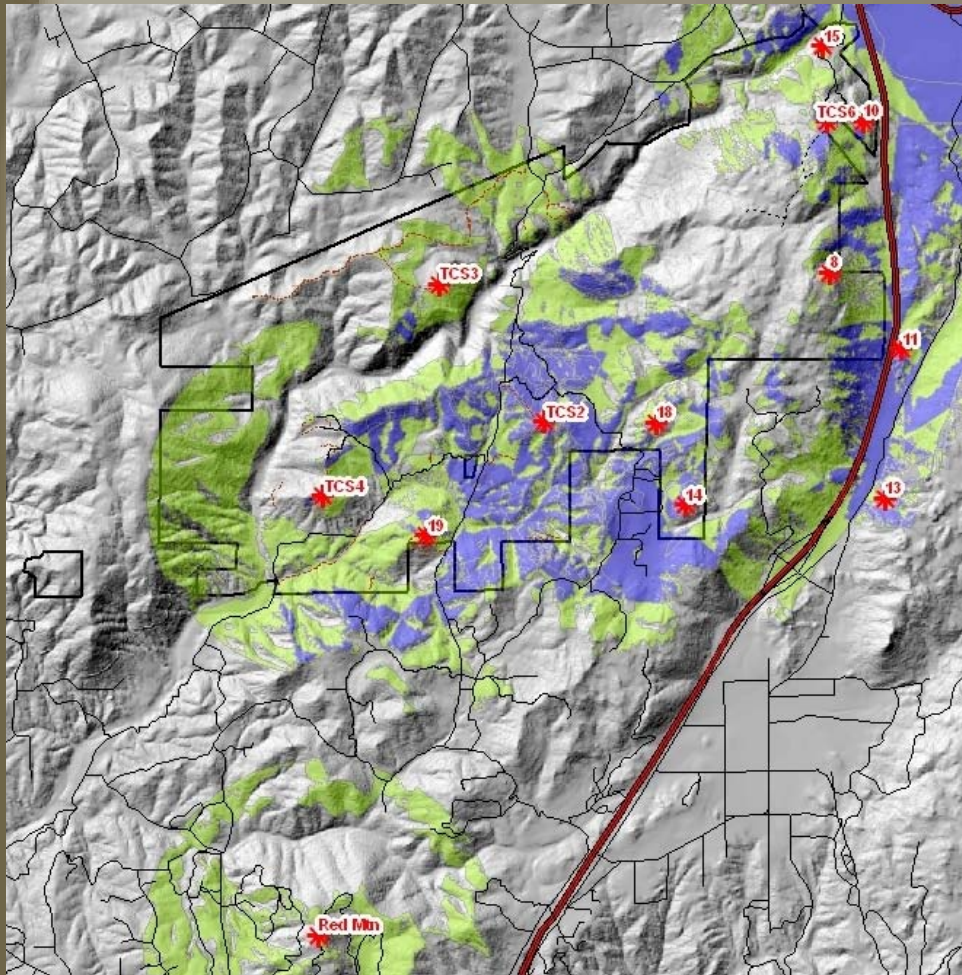


FireAlert by Ambient Control Systems

- 360 degree rotating eye
- 45 degree vertical view
- 20 year field life
- Detect 4x4' fire from $\frac{1}{4}$ mile
- Reports direction of fire in 10 degree increments
- Radio & satellite communication



Fire Sensor Demonstration Project at Santa Margarita Ecological Reserve



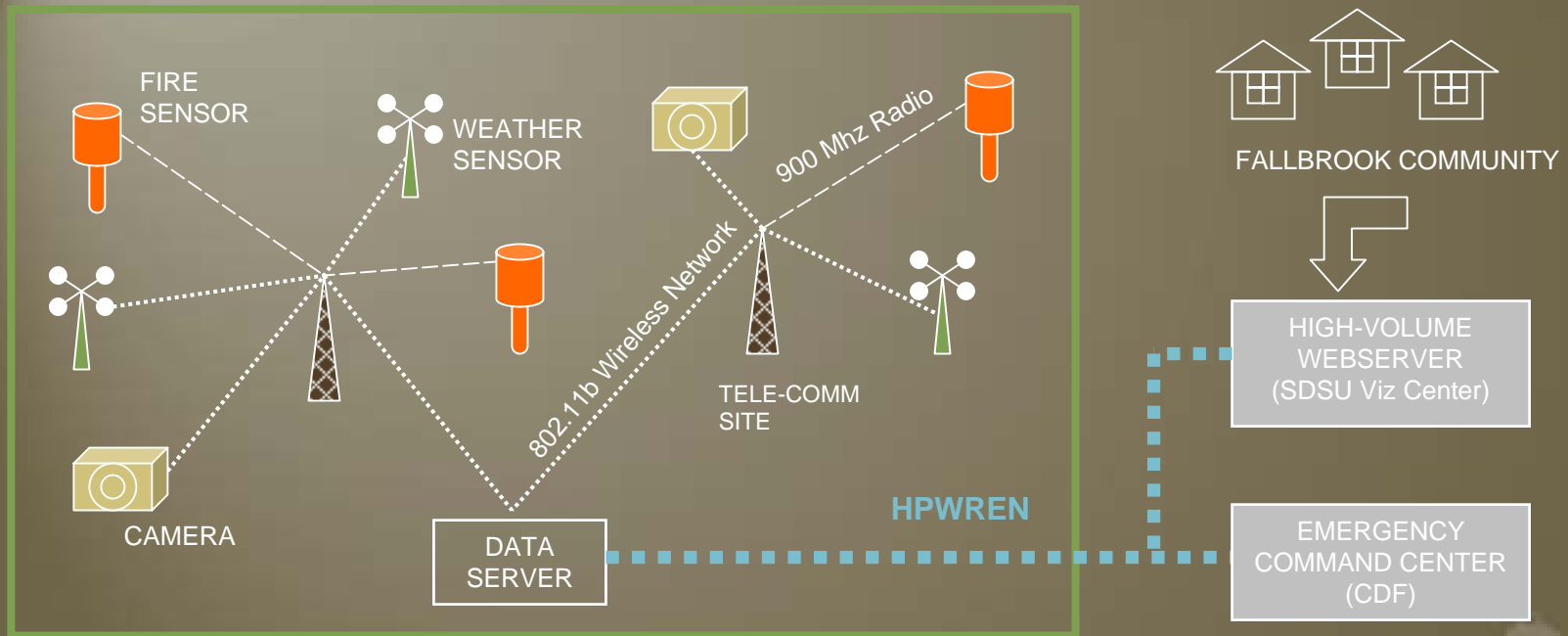
Coverage of rugged
backcountry & urban-
wildland interface using:

- 13 fire sensors
- 9 webcams
- 20 weather stations

Products:

- Early warning system for CDF
- Community Education website
- Evaluation of community response

Fire Sensor Demonstration Project at Santa Margarita Ecological Reserve



FSP Web Site, RoadNet and HPWREN

- Field Station Programs Web Site.
[Real Time Data, REMO](#)
- RoadNet Support and Web Display.
[Nagios](#)
- HPWREN Photo Page.
[Cameras](#)



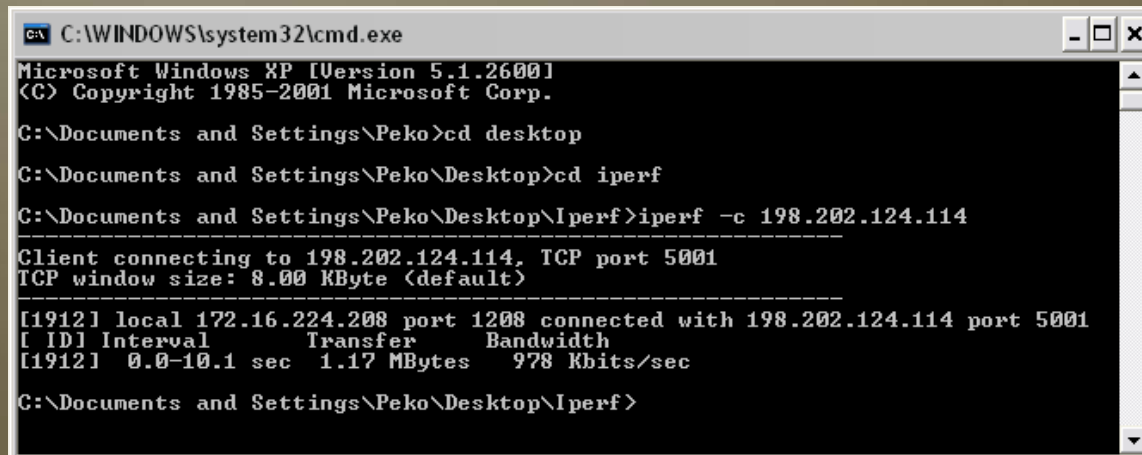
HPWREN at SDSU

- Upgraded links to Licensed 11GHz radios.
- Telecommunication and Network Services (TNS) routing HPWREN subnet 172.16.139.n on campus. (Karen Anderson and John Denune)
- Exploring the possibilities of using SDSU's 2.5GHz spectrum for future research.



Intra-SMER Backbone Upgrade

- Replace Lucent 2.4 GHz radios with Trango Atlas 5.3 – 5.8GHz radios.
- Augment solar power systems at TCS3 and TCS4 with the addition of two 80 watt PV panels and two 100ah batteries.



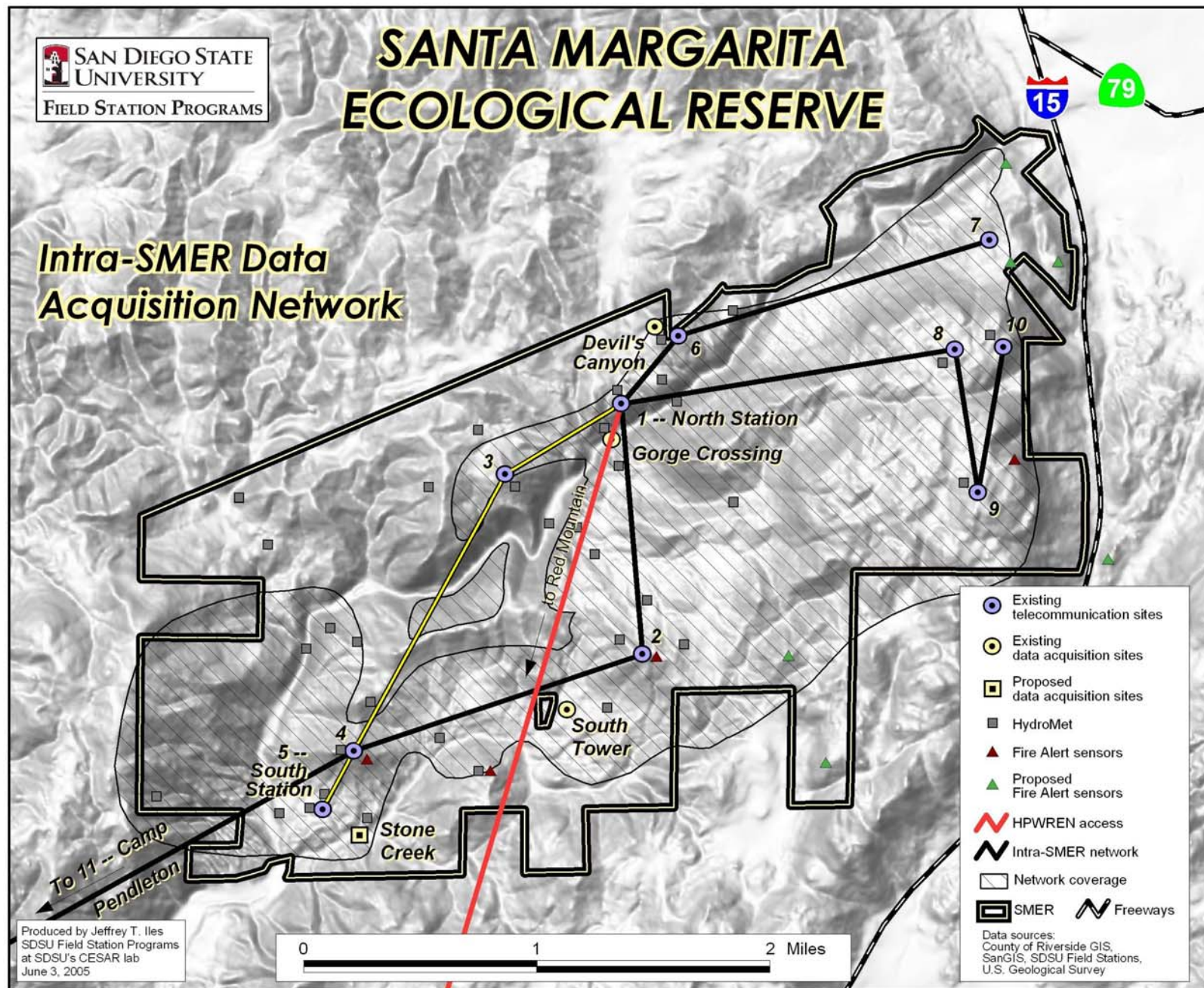
```
C:\WINDOWS\system32\cmd.exe
Microsoft Windows XP [Version 5.1.2600]
(C) Copyright 1985-2001 Microsoft Corp.

C:\Documents and Settings\Peko>cd desktop
C:\Documents and Settings\Peko\Desktop>cd iperf
C:\Documents and Settings\Peko\Desktop\Iperf>iperf -c 198.202.124.114

-----
Client connecting to 198.202.124.114, TCP port 5001
TCP window size: 8.00 KByte (default)
-----
[1912] local 172.16.224.208 port 1208 connected with 198.202.124.114 port 5001
[ ID] Interval           Transfer     Bandwidth
[1912] 0.0-10.1 sec    1.17 MBytes  978 Kbits/sec
C:\Documents and Settings\Peko\Desktop\Iperf>
```


SANTA MARGARITA ECOLOGICAL RESERVE

Intra-SMER Data Acquisition Network



How do we respond to a regional disaster?

- How important is voice and data communications for operation of large scale emergency response?
- Identify sources of Internet access: HPWREN, Intra-SMER, Starbucks, Borders, home based cable...etc?
- What hardware is needed; Radios, VoIP, cameras, tripods, enclosures, generators...etc?
- What are the mechanisms for training, deployment?
- Where is the funding?

HIGH PERFORMANCE WIRELESS

HPWREN
RESEARCH & EDUCATION NETWORK

UCSD

SDSU

Sky Oaks Link

